

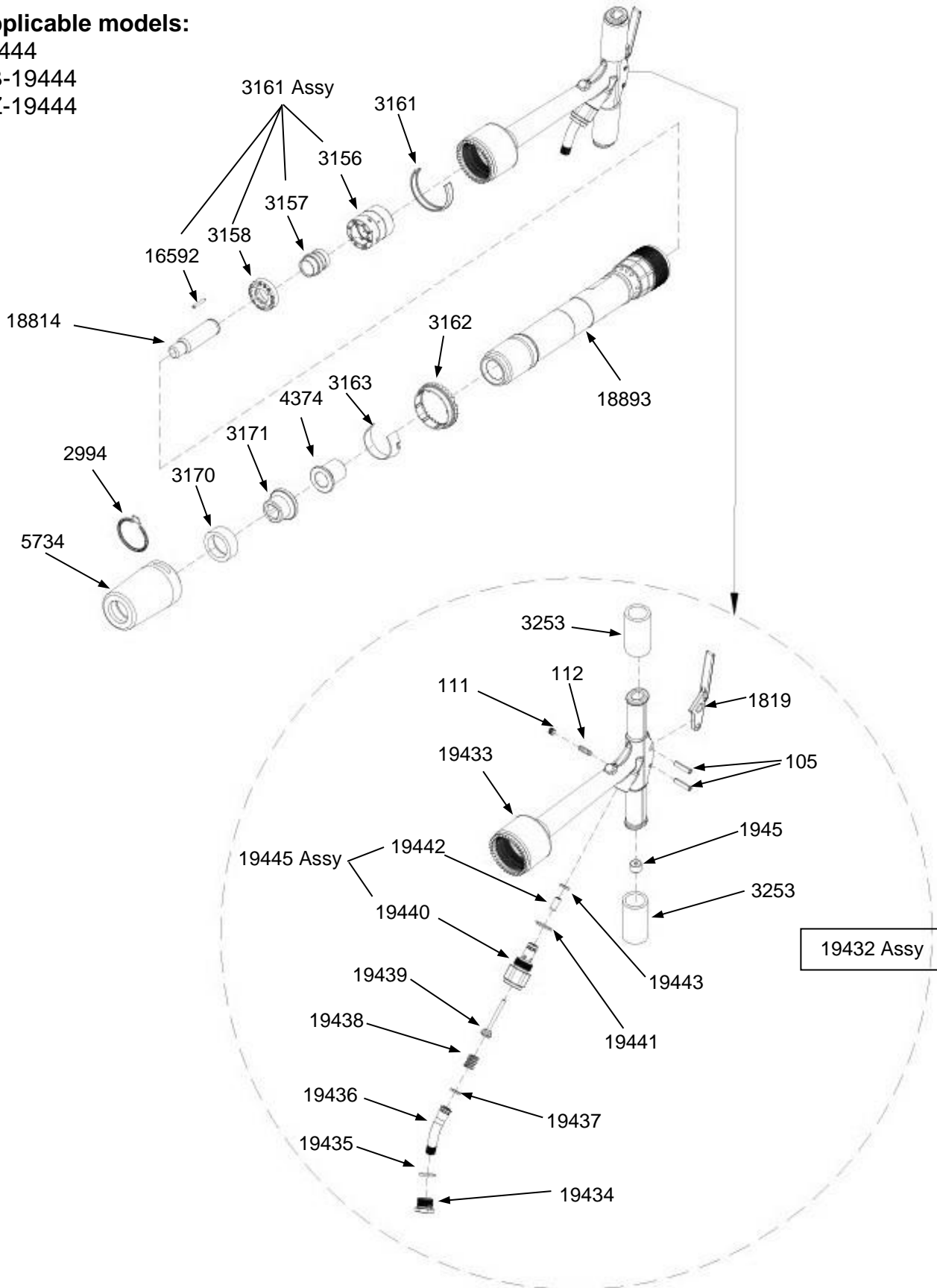


# American Pneumatic Tools

**M133CN**  
**RIVET BUSTER**  
(8" Stroke, T Handle)

**Applicable models:**

- 19444
- SB-19444
- HZ-19444





# American Pneumatic Tools

**M133CN**  
**RIVET BUSTER**  
 (8" Stroke, T Handle)

APT #	SAP#	Description	Qty
105	1280582902	105 Roll Pin	2
111	1280582909	111 Plug	1
112	1280582910	112 Oil Control Felt	1
1819	1280583413	1819 Throttle Lever	1
1945	1280583436	1945 Oil Inlet Plug	1
2994	1280583083	2994 Locking Spring	1
3156	1280583105	3156 Rear Valve Chest	1
3157	1280583106	3157 Automatic Valve	1
3158	1280583107	3158 Front Valve Chest	1
3160	1280583108	3160 Valve Assembly (Includes 3161, 3156, 3157, 3158, 16592)	(1)
3161	1280583493	3161 Spring	1
3162	1280583494	3162 Locking Ring	1
3163	1280583495	3163 Deflector	1
3170	1280583497	3170 Rubber Bumper	1
3171	1280583498	3171 Lower Sleeve	1
3253	1280583506	3253 Rubber Grip	2
4374	1280583553	4374 Upper Sleeve	1
5734	1280582767	5734 Retainer Housing	1
16592	1280582264	16592 Location Pin	1
18829	1280583892	18829 Piston	1
18893	1280583625	18893 Cylinder (Closed Nose)	1
19432	1280179532	19432 Handle-complete Assembly (Includes 105, 111, 112, 1819, 1945, 3523, 19433, 19434, 19435, 19436, 19437, 19438, 19439, 19441, 19443, 19445)	(1)
19433	1280179533	19433 Handle- Bare	1
19434	1280179534	19434 Air Inlet Nut	1
19435	1280179535	19435 O Ring Seal	1
19436	1280179536	19436 Air Inlet Swivel	1
19437	1280179538	19437 O Ring Seal	1
19438	1280179537	19438 Throttle Spring	1
19439	1280179539	19439 Throttle Valve	1
19440	1280179541	19440 Throttle Valve Housing (Not sold separately, See 19445)	1
19441	1280179543	19441 O Ring Seal	1
19442	1280179547	19442 Bushing	1
19443	1280179549	19443 O Ring Seal	1
19445	1280201653	19445 Throttle Valve Housing Assembly (Includes 19440, 19442)	(1)